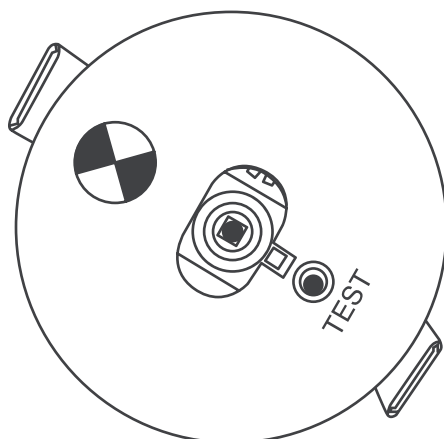




LED RECESSED EMERGENCY DOWNLIGHTS INSTALLATION AND OPERATING INSTRUCTIONS

EDLD63



BUSINESS NAME:

CONTACT:

INSTALLATION DATE:



INSTALLATION NOTES

VOLTEX

SPECIFICATIONS

Power Supply	220-240VAC, 50/60HZ
Power Consumption	Max.3W
Operating temperature	0°C~45°C
Luminaire Class	Class-II
Nominal CCT	5000K
Operation	Non-maintained
Rating	IP20
Function	Manual test and Auto Test
Lumen output	300lm
CRI	>70

PRECAUTIONS

This product should be installed by a registered electrician in accordance with local standards and electrical regulations.

Isolate mains supply before installation.

The luminaire should be positioned so that prolonged staring into the luminaire at a distance closer than 0.3m is not expected.

Risk of fire-required clearance from structural members and building elements, ICF/IC4 rated – no clearance required from building elements.

Do not use for high-risk task area lighting

Proof against supply voltage polarity reversal

Reinforced insulation between the supply and the battery circuit

Recharging device will recharge the battery normally after recharging device operated at 1,1 times rated supply voltage and the maximum of the declared ambient temperature range with the batteries disconnected and replaced by a short circuit

Recessed LED Downlight Caution: The luminaire is suitable for covering with thermally insulated material.

SERVICE & OPERATION

Normal Operation:

The green indicator light on faceplate stays on. The LED will go out if the mains supply falls, the internal charger malfunctions, or the unit in test mode.

Battery:

Sealed LiFePO4 rechargeable battery pack. Battery should be replaced when the required duration is no longer achieved. To avoid any damage to the fixture and ensure its performance, the battery should be replaced with same brand and type. Suitable for use intermittent re-charging

Test Switch:

Press the test switch button, LED indicator will go out and the fixture will be illuminated from its battery pack.

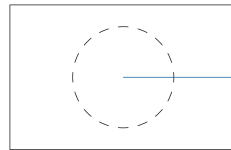
LED lamp:

Non replaceable.

INSTALLATION

FIG 1

If using adapter plate cutout 105mm diameter hole, if not, cut out a 50mm diameter hole.



50mm or
105 mm

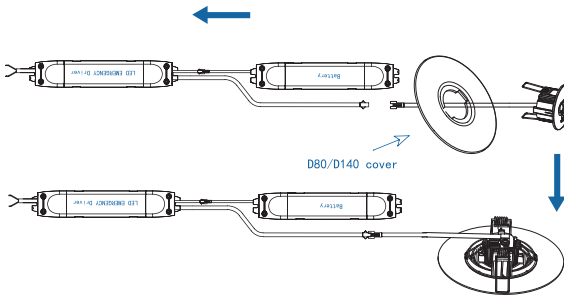


FIG 2

If you are using the surround, unplug the led fitting and fit the surround in place, then plug fitting back in.

FIG 3

Plug in EDLD63 into power socket and slide battery pack and receiver into the ceiling space, fit the EDLD63 into place.

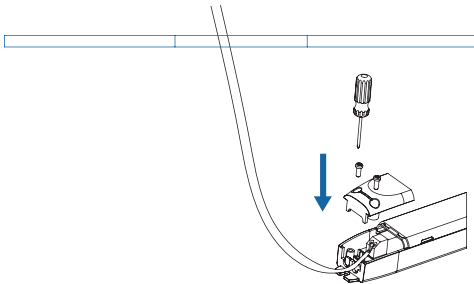


FIG 4

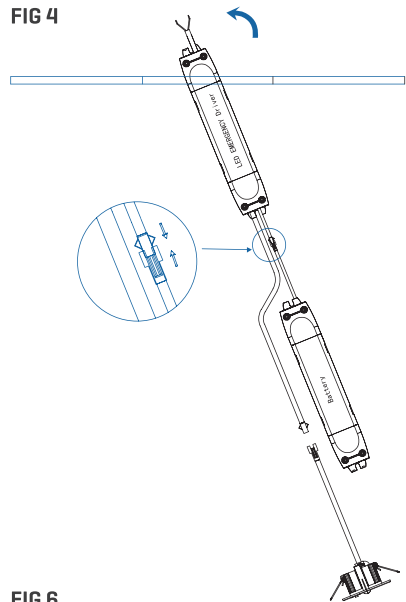


FIG 5

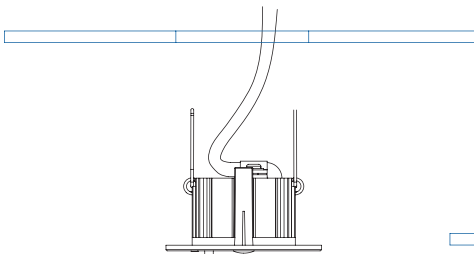
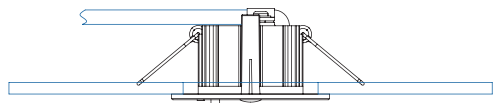
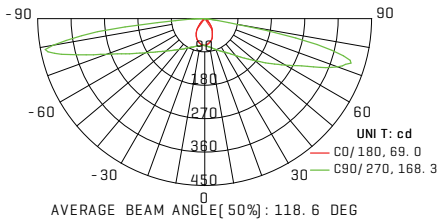


FIG 6



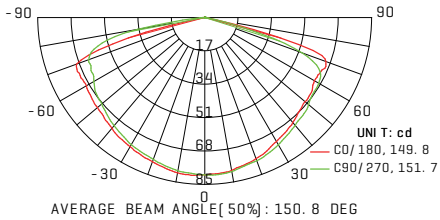
PHOTOMETRIC DATA

Oval lens for pathway application



Mounting height	Spacing [C0]		Spacing [C90]	
2.5m	3.2m	7.2m	12.5m	25.1m
3.0m	3.5m	8m	13.6m	27m
3.5m	3.7m	8.6m	14.5m	29.4m

Round lens for open area application



Mounting height	Spacing [C0/C90]	
2.5m	5.2m	9m
3.0m	6.1m	11.1m
3.5m	6.6m	12.6m

Compliant EUROPE standard EN1838 illuminance requirement:
 Escape route up to 2m wide, 1lx on central axis and 0.5lx at 50% of the width.

TECHNICAL INFORMATION

Type	Input Voltage	Input Current	Power	PF	Output Charge Current	Output Charge Voltage	Charge Duration
EDL63	220-240V~50/60Hz	35mA Max.	3W Max.	>0.3	300mA	5.8V-7.15VDC	16H

Type	Battery Discharge Current	Battery Voltage	Discharge Duration	Output LED Current	Output LED Voltage	Battery	Test Mode
EDL63	500mA	5.8V-7.15VDC	2H	800mA.	2.8V-3.2VDC	LiFePO4 6.4V 1500mAh	Auto

INSTRUCTIONS FOR AUTOMATIC TEST OPTION

1. Instruction for Automatic test function

- Once the unit is powered up, a self diagnostic test will be automatically initiated and run every second
 - Check battery, lamp and charge board
 - Runs a 2H duration test every six months
- Note: All test functions are preset and cannot be adjusted

2. Dual Colour LED Status Indicator

- Green indicator on: Ready/ Normal Operation
- Yellow indicator flashes: Require service

Fast Yellow Flash: 0.5s ON and 0.5s OFF	Errors
Slow Yellow Flash: 1s ON and 1s OFF	Under Test
Slow Yellow Flash: 4s ON and 1s OFF [The indication remains for 5 days and reverts to normal Green]	Work Normally

3. Manual Test/Button Test

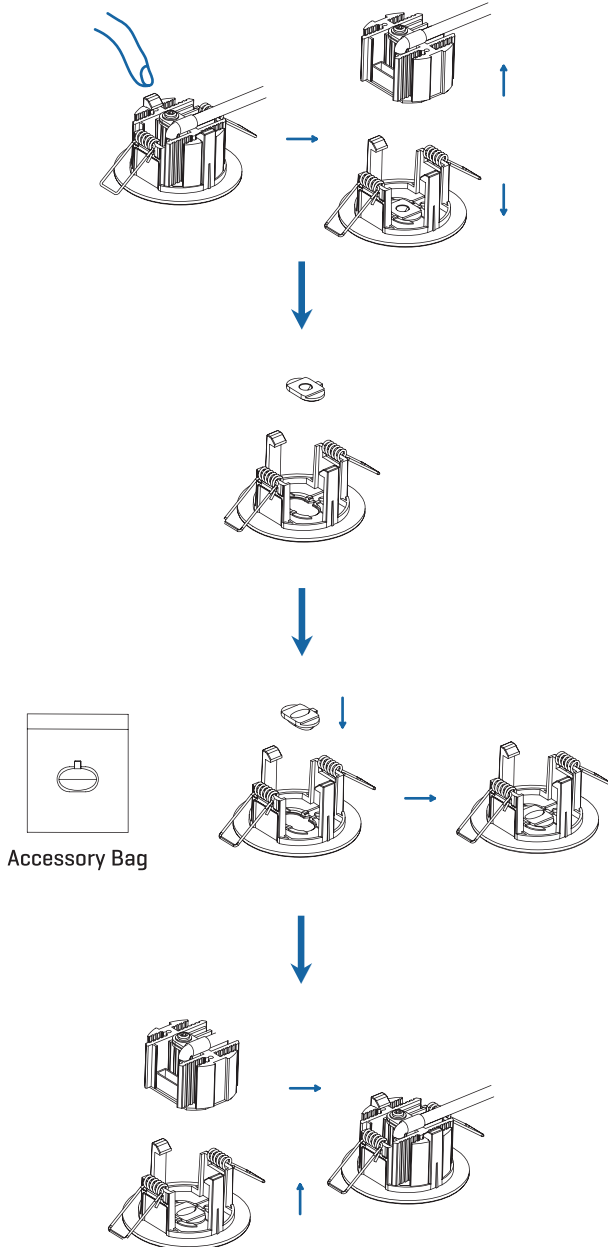
Press test button once with 0.2s to 1s	Run a 5s duration test
Press test button twice within 2 seconds	Run a 3 minute duration test
Press test button 3 times within 2 seconds	Run a 30 minutes duration test
Press test button 4 times within 2 seconds	Run a 2 hours duration test
Press test button more than 2s	Clean Errors

Manual Test Interruption

Pressing the button once during emergency discharge cancels the process, switching the green indicator to steady illumination.

Note: When the fault is restored, press the test button for 2s, the yellow flashing indicator will turn green. The fault is cleared, and the unit is back to normal.

CHANGE LENS OPTIONAL





IP20



Voltex warrants its Emergency Lighting against defective workmanship and faulty materials for 7 years from the original date of purchase. Please retain proof of purchase and certificate of electrical compliance.

Contact Voltex Electrical on 1300 722 275 [Australia]
or 0800 55 66 33 [New Zealand] for any warranty claims.

VOLTEX[®]

© Voltex Electrical 2024. All Rights Reserved.

AU P: 1300 722 275
E: sales@voltex.com
www.voltex.com

NZ P: 0800 55 66 33
E: sales@voltex.com
www.voltex.com